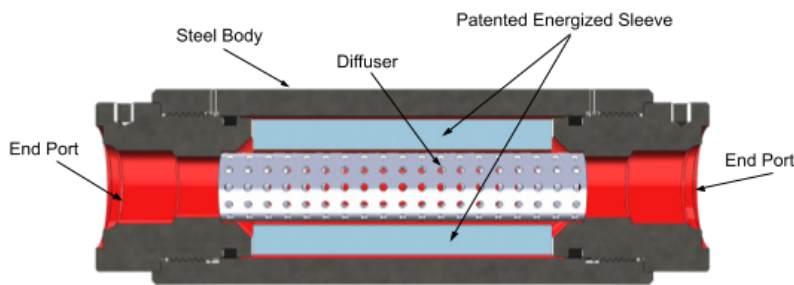


# ENERGIZED SLEEVE NOISE SUPPRESSOR



- Maintenance Free
- No Pre-Charge Required

---

- Reduces Noise
- Reduces Vibration
- Absorbs Hydraulic Shock
- Reduces Pulsations

---

- Easy, Inline Installation
- Multiple Configurations
- Negligible Pressure Drop

---

- Increases Longevity
- Improves Worker Comfort

Wilkes Pulse's new, patented Energized Sleeve line of suppressors (pictured above) use a proprietary hydraulically stable engineered foam to effectively treat hydraulic noise. The Energized Sleeve locally reduces the effective stiffness in the hydraulic system similar to the bladder in traditional hydraulic suppressors or the expansion chamber of a hydraulic muffler.

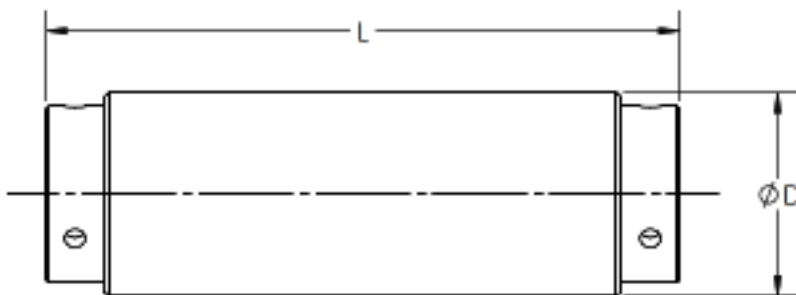
The energized sleeve suppressors can work as drop-in replacements for the Wilkes & McLean bladder style suppressors. Available in the same size as our bladder suppressors, we can accommodate line sizes from 3/8 inch to 2 inches, handling your most demanding hydraulic needs.

The structural elements of our standard suppressors are made of carbon steel, and all external elements are black oxide coated. Non-standard coatings and stainless steel options available on request.

Standard		
Maximum Pressure	Connection Type	Page Number
1000 PSI	NPT	2
	SAE	2
	BSPP	2
	SPLIT FLANGE	5
3000 PSI	NPT	3
	SAE	3
	BSPP	3
	SPLIT FLANGE	5
5000 PSI	SAE	4
	BSPP	4
	SPLIT FLANGE	5

Stainless Steel		
Maximum Pressure	Connection Type	Page Number
1000 PSI	NPT	6
	SAE	6
	BSPP	6
	SPLIT FLANGE	9
3000 PSI	NPT	7
	SAE	7
	BSPP	7
	SPLIT FLANGE	9
5000 PSI	SAE	8
	BSPP	8
	SPLIT FLANGE	9

# 1000 PSI THREADED SUPPRESSORS



Model	Line Size	Maximum Flow Rate gpm (lpm)	Dimensions		Approximate Weight lbs (kg)
			D in (mm)	L in (mm)	

## NPT

WM-1056-.375NPT-ES	3/8 in	15.1	2.48	6.88	5.8
WM-1056-.5NPT-ES	1/2 in				
WM-1081-.75NPT-ES	3/4 in	32.1	2.60	8.11	6.8
WM-1081-1NPT-ES	1 in				
WM-1138-1NPT-ES	1 in				
WM-1138-1.25NPT-ES	1 1/4 in	91.9	3.85	8.89	15.4
WM-1138-1.5NPT-ES	1 1/2 in				
WM-11875-1.5NPT-ES	1 1/2 in	171.0	4.60	10.51	21.2
WM-11875-2NPT-ES	2 in				

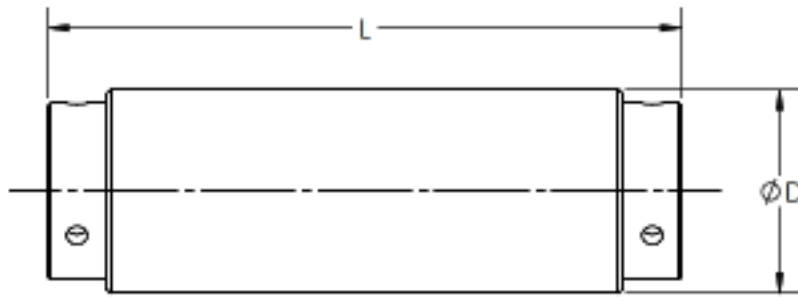
## SAE

Model	Line Size	Max Flow	Dimension D	Dimension L	Approx Weight
WM-1056-6SAE-ES	3/8 in				
WM-1056-8SAE-ES	1/2 in	15.1	2.48	6.88	5.8
WM-1056-10SAE-ES	5/8 in				
WM-1081-12SAE-ES	3/4 in				
WM-1081-16SAE-ES	1 in	32.1	2.60	8.11	6.8
WM-1081-20SAE-ES	1 1/4 in				
WM-1138-16SAE-ES	1 in				
WM-1138-20SAE-ES	1 1/4 in	91.9	3.85	8.89	15.4
WM-1138-24SAE-ES	1 1/2 in				
WM-11875-32SAE-ES	2 in	171.0	4.60	10.51	21.2

## BSPP

Model	Line Size	Max Flow	Dimension D	Dimension L	Approx Weight
WM-1056-.375BSP-ES	3/8 in				
WM-1056-.5BSP-ES	1/2 in	(57.2)	(63.0)	(174.8)	(2.6)
WM-1081-.75BSP-ES	3/4 in				
WM-1081-1BSP-ES	1 in	(121.5)	(66.0)	(206.0)	(3.1)
WM-1081-1.25BSP-ES	1 1/4 in				
WM-1138-1BSP-ES	1 in				
WM-1138-1.25BSP-ES	1 1/4 in	(347.9)	(97.7)	(225.7)	(7.0)
WM-1138-1.5BSP-ES	1 1/2 in				
WM-11875-1.5BSP-ES	1 1/2 in	(647.3)	(116.7)	(266.8)	(9.6)
WM-11875-2BSP-ES	2 in				

# 3000 PSI THREADED SUPPRESSORS



Model	Line Size	Maximum Flow Rate gpm (lpm)	Dimensions		Approximate Weight lbs (kg)
			D in (mm)	L in (mm)	

## NPT

WM-3056-.375NPT-ES	3/8 in	15.1	2.48	6.88	5.8
WM-3056-.5NPT-ES	1/2 in				
WM-3081-.75NPT-ES	3/4 in	32.1	2.60	8.11	6.8
WM-3081-1NPT-ES	1 in				
WM-3138-1NPT-ES	1 in				
WM-3138-1.25NPT-ES	1 1/4 in	91.9	3.85	8.89	17.8
WM-3138-1.5NPT-ES	1 1/2 in				
WM-31875-1.5NPT-ES	1 1/2 in	171.0	4.60	10.51	24.8
WM-31875-2NPT-ES	2 in				

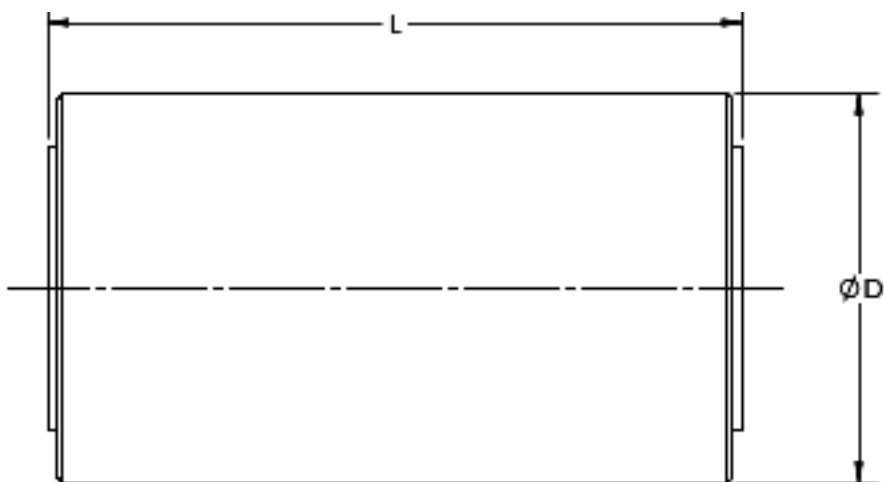
## SAE

Model	Line Size	Max Flow	Dimension D	Dimension L	Approx Weight
WM-3056-6SAE-ES	3/8 in				
WM-3056-8SAE-ES	1/2 in	15.1	2.48	6.88	5.8
WM-3056-10SAE-ES	5/8 in				
WM-3081-12SAE-ES	3/4 in				
WM-3081-16SAE-ES	1 in	32.1	2.60	8.11	6.8
WM-3081-20SAE-ES	1 1/4 in				
WM-3138-16SAE-ES	1 in				
WM-3138-20SAE-ES	1 1/4 in	91.9	3.98	8.89	17.8
WM-3138-24SAE-ES	1 1/2 in				
WM-31875-32SAE-ES	2 in	171.0	4.73	10.51	24.8

## BSPP

Model	Line Size	Max Flow	Dimension D	Dimension L	Approx Weight
WM-3056-.375BSPP-ES	3/8 in	(57.2)	(63.0)	(174.8)	(2.6)
WM-3056-.5BSPP-ES	1/2 in				
WM-3081-.75BSPP-ES	3/4 in				
WM-3081-1BSPP-ES	1 in	(121.5)	(66.0)	(206.0)	(3.1)
WM-3081-1.25BSPP-ES	1 1/4 in				
WM-3138-1BSPP-ES	1 in				
WM-3138-1.25BSPP-ES	1 1/4 in	(347.9)	(101.1)	(225.7)	(8.1)
WM-3138-1.5BSPP-ES	1 1/2 in				
WM-31875-1.5BSPP-ES	1 1/2 in	(647.3)	(120.1)	(266.8)	(11.2)
WM-31875-2BSPP-ES	2 in				

# 5000 PSI THREADED SUPPRESSORS



Model	Line Size	Maximum Flow Rate gpm (lpm)	Dimensions		Approximate Weight lbs (kg)
			D in (mm)	L in (mm)	

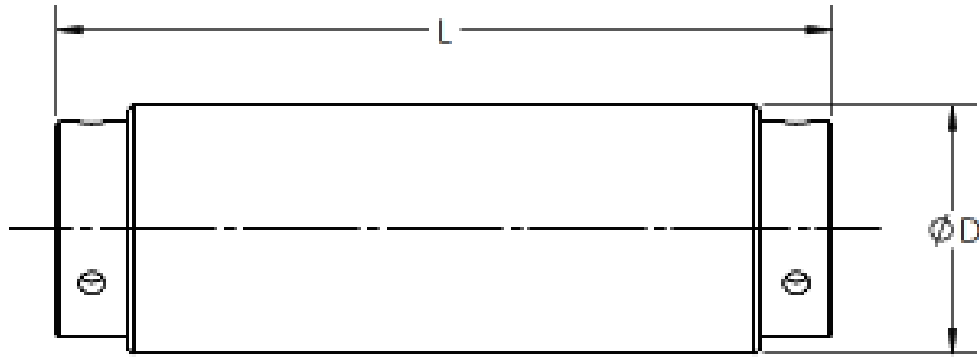
## SAE

WM-5056-6SAE-ES	3/8 in				
WM-5056-8SAE-ES	1/2 in	15.1	3.38	6.88	6.5
WM-5056-10SAE-ES	5/8 in				
WM-5081-12SAE-ES	3/4 in				
WM-5081-16SAE-ES	1 in	32.1	3.48	8.11	15
WM-5081-20SAE-ES	1 1/4				
WM-5138-16SAE-ES	1 in				
WM-5138-20SAE-ES	1 1/4 in	91.9	4.96	8.89	34.6
WM-5138-24SAE-ES	1 1/2 in				

## BSPP

Model	Line Size	Max Flow	Dimension D	Dimension L	Approx Weight
WM-5056-.375BSP-ES	3/8 in	(57.2)	(85.7)	(174.8)	(6.8)
WM-5056-.5BSP-ES	1/2 in				
WM-5081-.75BSP-ES	3/4 in				
WM-5081-1BSP-ES	1 in	(121.5)	(88.4)	(206.0)	(6.8)
WM-5081-1.25BSP-ES	1 1/4 in				
WM-5138-1BSP-ES	1 in				
WM-5138-1.25BSP-ES	1 1/4 in	(347.9)	(126.0)	(225.7)	(15.7)
WM-5138-1.5BSP-ES	1 1/2 in				

# SPLIT FLANGE SUPPRESSORS



Model	Line Size	Maximum Flow Rate gpm (lpm)	Dimensions		Approximate Weight lbs (kg)
			D in (mm)	L in (mm)	

## 1000 PSI SAE CODE 61 SPLIT FLANGE

WM-1081-12SF-ES	3/4 in				
WM-1081-16SF-ES	1 in	32.1	2.60	10.13	6.5
WM-1081-20SF-ES	1 1/4 in				
WM-1138-20SF-ES	1 1/4 in			13.13	
WM-1138-24SF-ES	1 1/2 in	91.9	3.85	13.13	25
WM-1138-32SF-ES	2 in			13.38	
WM-31875-32SF-ES	2 in	171.0	4.60	15.01	32
OTHER SIZES MAY BE AVAILABLE					

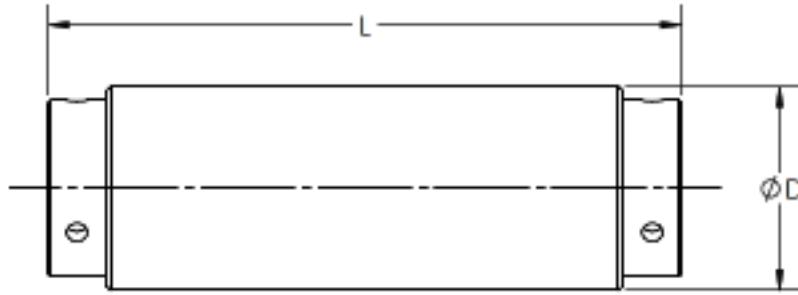
## 3000 PSI SAE CODE 61 SPLIT FLANGE

Model	Line Size	Max Flow	Dimension D	Dimension L	Approx Weight
WM-3081-12SF-ES	3/4 in				
WM-3081-16SF-ES	1 in	32.1	2.60	10.13	8
WM-3081-20SF-ES	1 1/4 in				
WM-3138-20SF-ES	1 1/4 in			13.13	
WM-3138-24SF-ES	1 1/2 in	91.9	3.98	13.13	25
WM-3138-32SF-ES	2 in			13.38	
WM-31875-32SF-ES	2 in	171.0	4.73	15.01	32
OTHER SIZES MAY BE AVAILABLE					

## 5000 PSI SAE CODE 62 SPLIT FLANGE

Model	Line Size	Max Flow	Dimension D	Dimension L	Approx Weight
WM-5081-12SFX-ES	3/4 in			10.13	
WM-5081-16SFX-ES	1 in	32.1	3.48	10.63	16
WM-5081-20SFX-ES	1 1/4 in			11.13	
WM-5138-20SFX-ES	1 1/4 in			13.13	
WM-5138-24SFX-ES	1 1/2 in	91.9	4.96	13.63	36
WM-5138-32SFX-ES	2 in			13.88	

# 1000 PSI STAINLESS STEEL THREADED SUPPRESSORS



303 and 316 may be available, note steel variety on order. Minimum orders may apply.

Model	Line Size	Maximum Flow Rate gpm (lpm)	Dimensions		Approximate Weight lbs (kg)
			D in (mm)	L in (mm)	

## NPT

WM-1056-.375NPT-ES-SS	3/8 in	15.1	2.48	6.88	5.8
WM-1056-.5NPT-ES-SS	1/2 in				
WM-1081-.75NPT-ES-SS	3/4 in	32.1	2.60	8.11	6.8
WM-1081-1NPT-ES-SS	1 in				
WM-1138-1NPT-ES-SS	1 in	91.9	3.85	8.89	15.4
WM-1138-1.25NPT-ES-SS	1 1/4 in				
WM-1138-1.5NPT-ES-SS	1 1/2 in				
WM-11875-1.5NPT-ES-SS	1 1/2 in	171.0	4.60	10.51	21.2
WM-11875-2NPT-ES-SS	2 in				

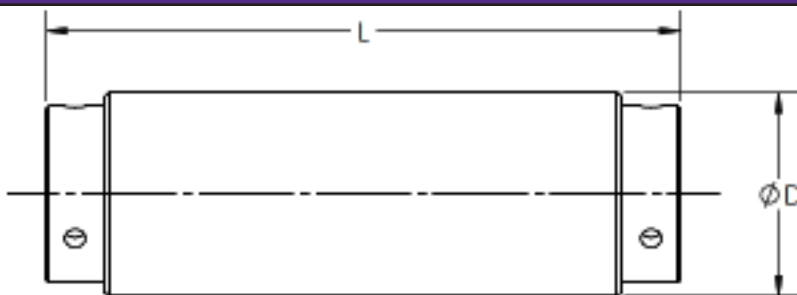
## SAE

Model	Line Size	Max Flow	Dimension D	Dimension L	Approx Weight
WM-1056-6SAE-ES-SS	3/8 in	15.1	2.48	6.88	5.8
WM-1056-8SAE-ES-SS	1/2 in				
WM-1056-10SAE-ES-SS	5/8 in	32.1	2.60	8.11	6.8
WM-1081-12SAE-ES-SS	3/4 in				
WM-1081-16SAE-ES-SS	1 in				
WM-1081-20SAE-ES-SS	1 1/4 in	91.9	3.85	8.89	15.4
WM-1138-16SAE-ES-SS	1 in				
WM-1138-20SAE-ES-SS	1 1/4 in				
WM-1138-24SAE-ES-SS	1 1/2 in	171.0	4.60	10.51	21.2
WM-11875-32SAE-ES-SS	2 in				

## BSPP

Model	Line Size	Max Flow	Dimension D	Dimension L	Approx Weight
WM-1056-.375BSP-ES-SS	3/8 in	(57.2)	(63.0)	(174.8)	(2.6)
WM-1056-.5BSP-ES-SS	1/2 in				
WM-1081-.75BSP-ES-SS	3/4 in	(121.5)	(66.0)	(206.0)	(3.1)
WM-1081-1BSP-ES-SS	1 in				
WM-1081-1.25BSP-ES-SS	1 1/4 in	(347.9)	(97.7)	(225.7)	(7.0)
WM-1138-1BSP-ES-SS	1 in				
WM-1138-1.25BSP-ES-SS	1 1/4 in				
WM-1138-1.5BSP-ES-SS	1 1/2 in	(647.3)	(116.7)	(266.8)	(9.6)
WM-11875-1.5BSP-ES-SS	1 1/2 in				
WM-11875-2BSP-ES-SS	2 in				

# 3000 PSI STAINLESS STEEL THREADED SUPPRESSORS



303 and 316 may be available, note steel variety on order. Minimum orders may apply.

Model	Line Size	Maximum Flow Rate gpm (lpm)	Dimensions		Approximate Weight lbs (kg)
			D in (mm)	L in (mm)	

## NPT

WM-3056-.375NPT-ES-SS	3/8 in	15.1	2.48	6.88	5.8
WM-3056-.5NPT-ES-SS	1/2 in				
WM-3081-.75NPT-ES-SS	3/4 in	32.1	2.60	8.11	6.8
WM-3081-1NPT-ES-SS	1 in				
WM-3138-1NPT-ES-SS	1 in				
WM-3138-1.25NPT-ES-SS	1 1/4 in	91.9	3.85	8.89	17.8
WM-3138-1.5NPT-ES-SS	1 1/2 in				
WM-31875-1.5NPT-ES-SS	1 1/2 in	171.0	4.60	10.51	24.8
WM-31875-2NPT-ES-SS	2 in				

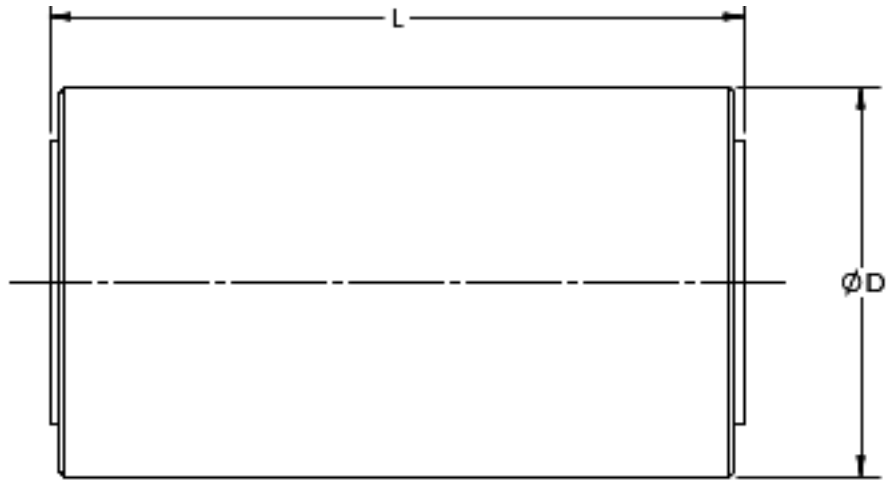
## SAE

Model	Line Size	Max Flow	Dimension D	Dimension L	Approx Weight
WM-3056-6SAE-ES-SS	3/8 in				
WM-3056-8SAE-ES-SS	1/2 in	15.1	2.48	6.88	5.8
WM-3056-10SAE-ES-SS	5/8 in				
WM-3081-12SAE-ES-SS	3/4 in				
WM-3081-16SAE-ES-SS	1 in	32.1	2.60	8.11	6.8
WM-3081-20SAE-ES-SS	1 1/4 in				
WM-3138-16SAE-ES-SS	1 in				
WM-3138-20SAE-ES-SS	1 1/4 in	91.9	3.98	8.89	17.8
WM-3138-24SAE-ES-SS	1 1/2 in				
WM-31875-32SAE-ES-SS	2 in	171.0	4.73	10.51	24.8

## BSP

Model	Line Size	Max Flow	Dimension D	Dimension L	Approx Weight
WM-3056-.375BSP-ES-SS	3/8 in				
WM-3056-.5BSP-ES-SS	1/2 in	(57.2)	(63.0)	(174.8)	(2.6)
WM-3081-.75BSP-ES-SS	3/4 in				
WM-3081-1BSP-ES-SS	1 in	(121.5)	(66.0)	(206.0)	(3.1)
WM-3081-1.25BSP-ES-SS	1 1/4 in				
WM-3138-1BSP-ES-SS	1 in				
WM-3138-1.25BSP-ES-SS	1 1/4 in	(347.9)	(101.1)	(225.7)	(8.1)
WM-3138-1.5BSP-ES-SS	1 1/2 in				
WM-31875-1.5BSP-ES-SS	1 1/2 in	(647.3)	(120.1)	(266.8)	(11.2)
WM-31875-2BSP-ES-SS	2 in				

# 5000 PSI STAINLESS STEEL THREADED SUPPRESSORS



303 and 316 may be available, note steel variety on order. Minimum orders may apply.

Model	Line Size	Maximum Flow Rate gpm (lpm)	Dimensions		Approximate Weight lbs (kg)
			D in (mm)	L in (mm)	

## SAE

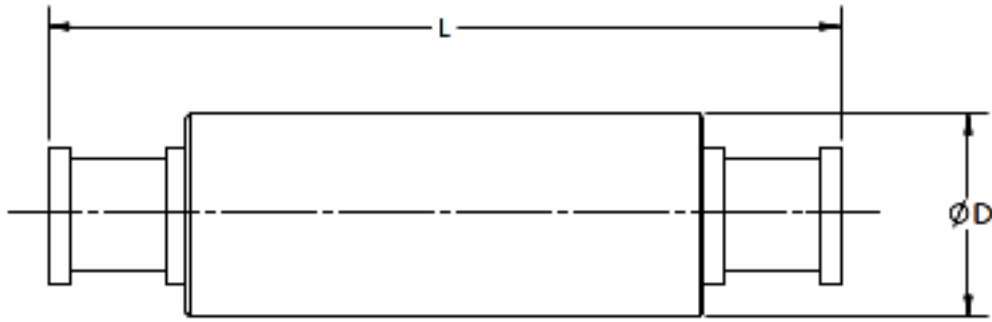
WM-5056-6SAE-ES-SS	3/8 in	15.1	3.38	6.88	6.5
WM-5056-8SAE-ES-SS	1/2 in				
WM-5056-10SAE-ES-SS	5/8 in	32.1	3.48	8.11	15
WM-5081-12SAE-ES-SS	3/4 in				
WM-5081-16SAE-ES-SS	1 in				
WM-5081-20SAE-ES-SS	1 1/4	91.9	4.96	8.89	34.6
WM-5138-16SAE-ES-SS	1 in				
WM-5138-20SAE-ES-SS	1 1/4 in				
WM-5138-24SAE-ES-SS	1 1/2 in				

## BSPP

Model	Line Size	Max Flow	Dimension D	Dimension L	Approx Weight
WM-5056-.375BSP-ES-SS	3/8 in	(57.2)	(85.7)	(174.8)	(6.8)
WM-5056-.5BSP-ES-SS	1/2 in				
WM-5081-.75BSP-ES-SS	3/4 in	(121.5)	(88.4)	(206.0)	(6.8)
WM-5081-1BSP-ES-SS	1 in				
WM-5081-1.25BSP-ES-SS	1 1/4 in				
WM-5138-1BSP-ES	1 in	(347.9)	(126.0)	(225.7)	(15.7)
WM-5138-1.25BSP-ES	1 1/4 in				
WM-5138-1.5BSP-ES	1 1/2 in				



# STAINLESS STEEL SPLIT FLANGE SUPPRESSORS



Model	Line Size	Maximum Flow Rate gpm (lpm)	Dimensions		Approximate Weight lbs (kg)
			D in (mm)	L in (mm)	

## 1000 PSI SAE CODE 61 SPLIT FLANGE

WM-1081-12SF-ES-SS	3/4 in				
WM-1081-16SF-ES-SS	1 in	32.1	2.60	10.13	6.5
WM-1081-20SF-ES-SS	1 1/4 in				
WM-1138-20SF-ES-SS	1 1/4 in			13.13	
WM-1138-24SF-ES-SS	1 1/2 in	91.9	3.85	13.13	25
WM-1138-32SF-ES-SS	2 in			13.38	

## 3000 PSI SAE CODE 61 SPLIT FLANGE

Model	Line Size	Max Flow	Dimension D	Dimension L	Approx Weight
WM-3081-12SF-ES-SS	3/4 in				
WM-3081-16SF-ES-SS	1 in	32.1	2.60	10.13	8
WM-3081-20SF-ES-SS	1 1/4 in				
WM-3138-20SF-ES-SS	1 1/4 in			13.13	
WM-3138-24SF-ES-SS	1 1/2 in	91.9	3.98	13.13	25
WM-3138-32SF-ES-SS	2 in			13.38	

## 5000 PSI SAE CODE 62 SPLIT FLANGE

Model	Line Size	Max Flow	Dimension D	Dimension L	Approx Weight
WM-5081-12SFX-ES-SS	3/4 in			10.13	
WM-5081-16SFX-ES-SS	1 in	32.1	3.48	10.63	16
WM-5081-20SFX-ES-SS	1 1/4 in			11.13	
WM-5138-20SFX-ES-SS	1 1/4 in			13.13	
WM-5138-24SFX-ES-SS	1 1/2 in	91.9	4.96	13.63	36
WM-5138-32SFX-ES-SS	2 in			13.88	